



Title:

Strut assembly manual

Document no.:

D2_W3_00

Revision:

R02

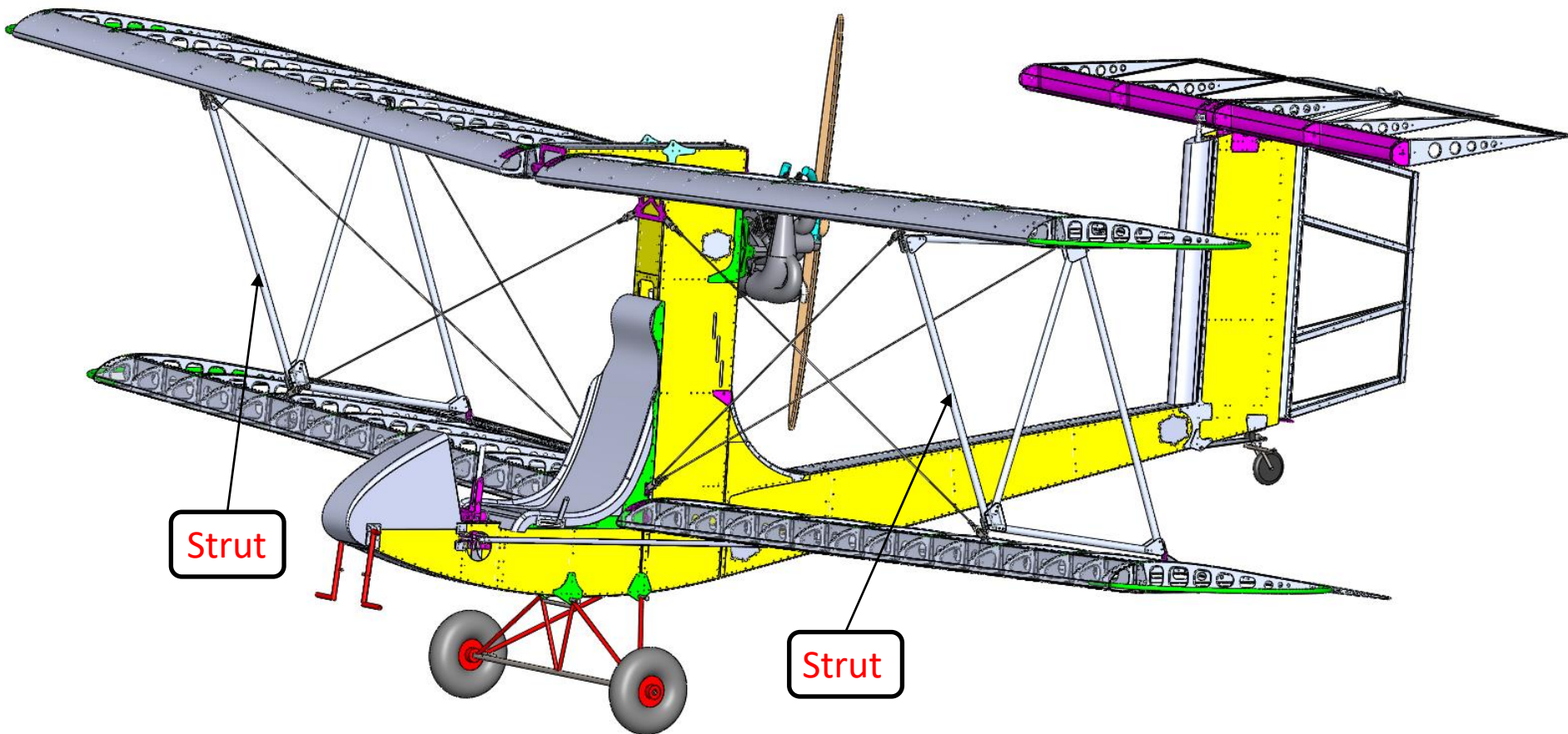
| Title | Document no. | Revision | Page | Pages |
|-----------------------|---------------------|-----------------|-------------|--------------|
| Strut assembly manual | D2_W3_00 | Rev. 02 | 1 | 17 |



Table of revisions

| Revision | Affected pages | Short description of change |
|----------|----------------|---|
| 00 | All | Original issue |
| 01 | 6, 16 | Tubes labeling corrected |
| 02 | 12, 13, 18 | Bolt lenghts corrected, Step 7 - page 18 deleted. |

| Title | Document no. | Revision | Page | Pages |
|-----------------------|--------------|----------|------|-------|
| Strut assembly manual | D2_W3_00 | Rev. 02 | 2 | 17 |



| Title | Document no. | Revision | Page | Pages |
|-----------------------|--------------|----------|------|-------|
| Strut assembly manual | D2_W3_00 | Rev. 02 | 3 | 17 |

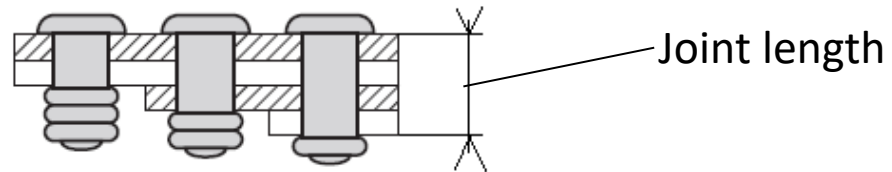


General instructions:

- This manual is for the right strut, the left one is symmetrical.
- Perform this assembly together with the installation of wings to the airplane (according to manual D2_00_00).
- Mark all bolt connections.
- It is the responsibility of each assembler, to check that the thickness of riveted parts matches the length of the rivet – follow:



“Permissible joint length of the rivets“:



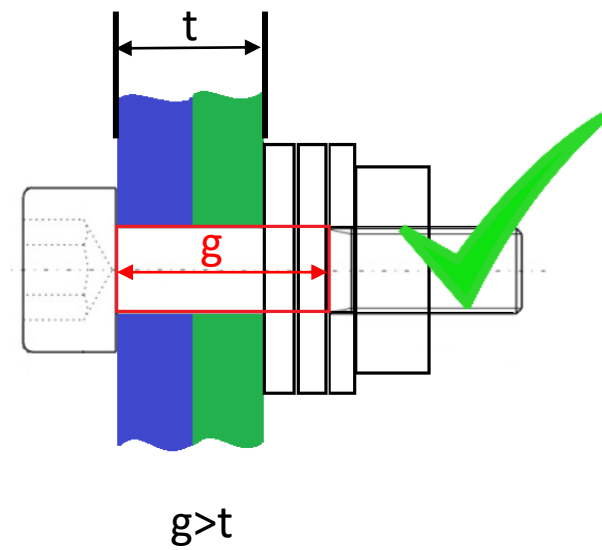
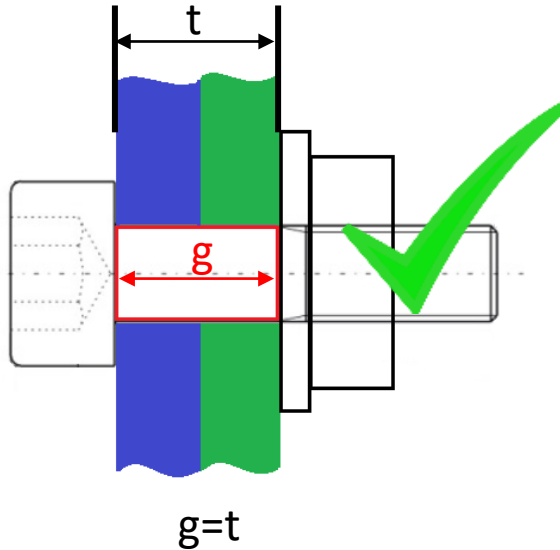
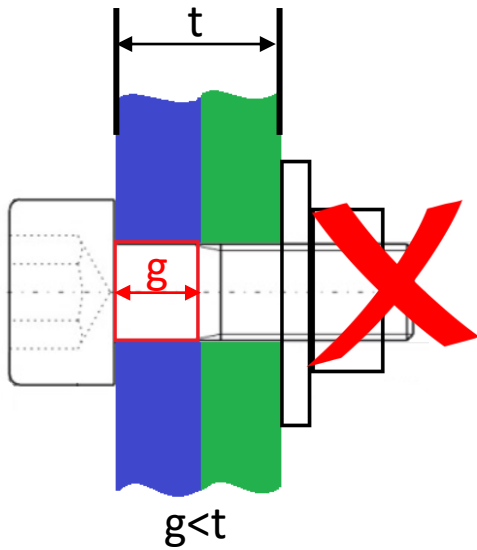
| Blind rivet type: | Manufacturer part number: | Can be also marked as: | | Min. length: | Max. length: |
|-------------------------------|---------------------------|------------------------|-------------------------------|--------------|--------------|
| AVINOX Φ 4x10 EST/EST PH | 14514010 | INOX 4x10 | AVINOX Φ 4x10 EST/EST PH | 1,5mm | 5,0mm |

| Title | Document no. | Revision | Page | Pages |
|-----------------------|--------------|----------|------|-------|
| Strut assembly manual | D2_W3_00 | Rev. 02 | 4 | 17 |

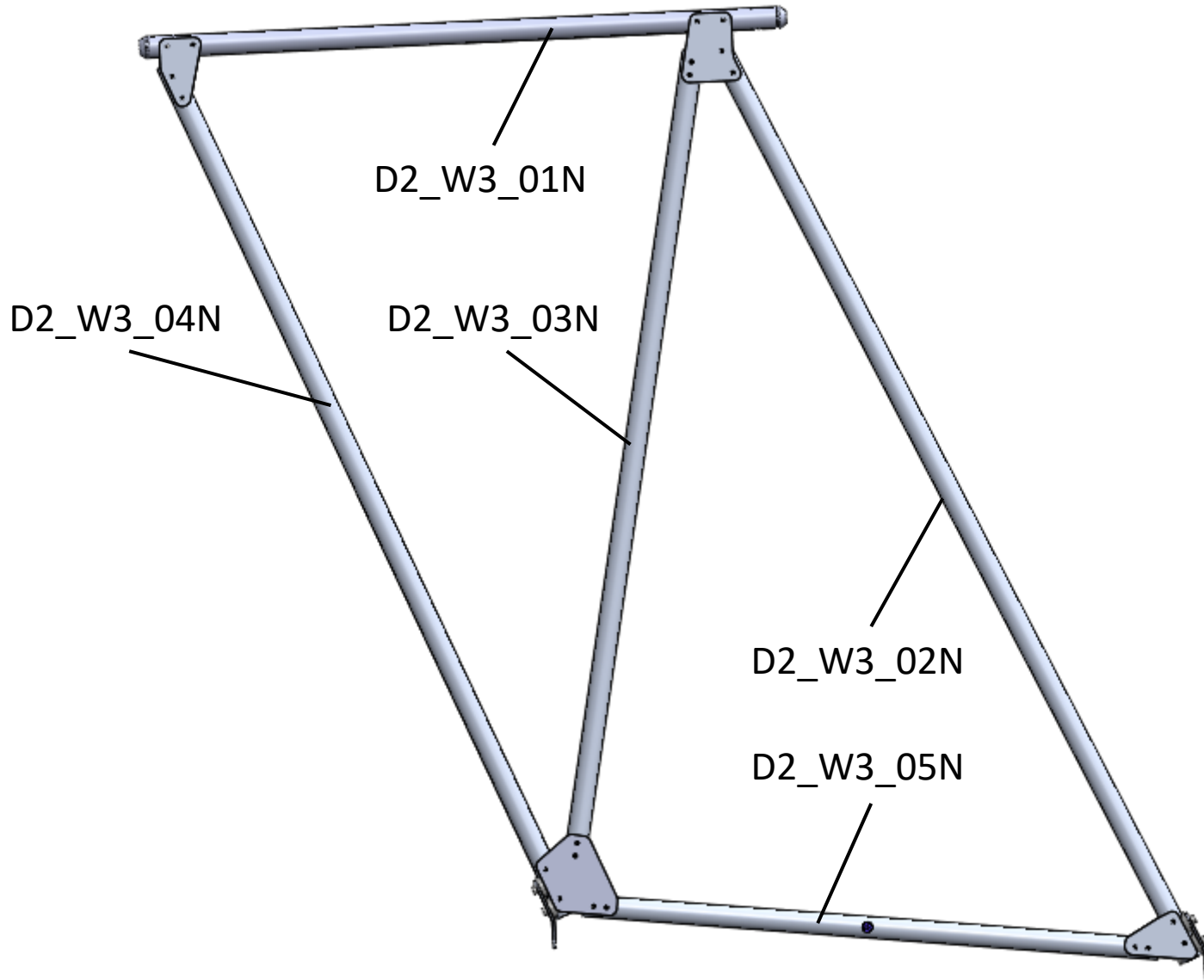


General instructions:

- It is the responsibility of each assembler, to check the grip length of the bolt and ensure, that the grip length (g) matches, or exceeds the thickness (t) of connected parts.



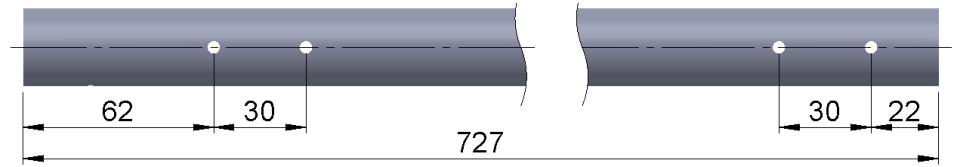
| Title | Document no. | Revision | Page | Pages |
|-----------------------|--------------|----------|------|-------|
| Strut assembly manual | D2_W3_00 | Rev. 02 | 5 | 17 |



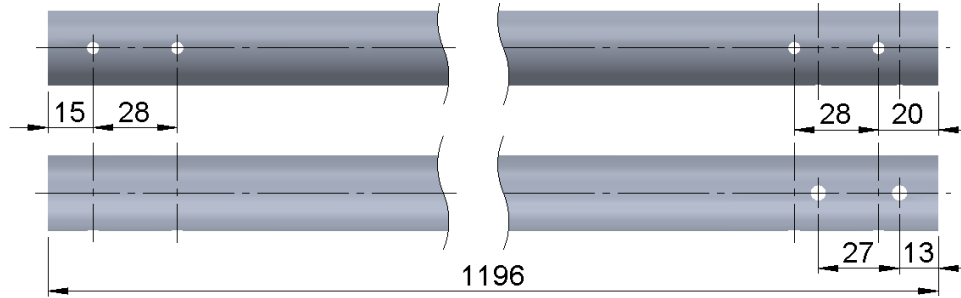
| Title | Document no. | Revision | Page | Pages |
|-----------------------|--------------|----------|------|-------|
| Strut assembly manual | D2_W3_00 | Rev. 02 | 6 | 17 |



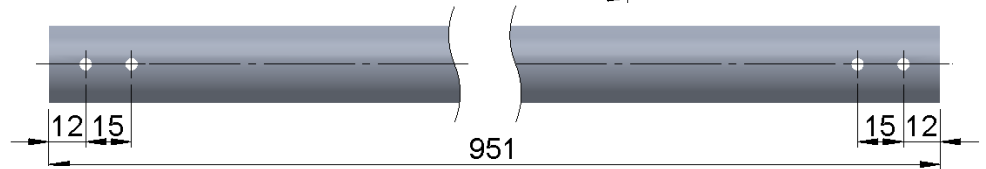
Part: D2_W3_01N
Quantity: 1+1



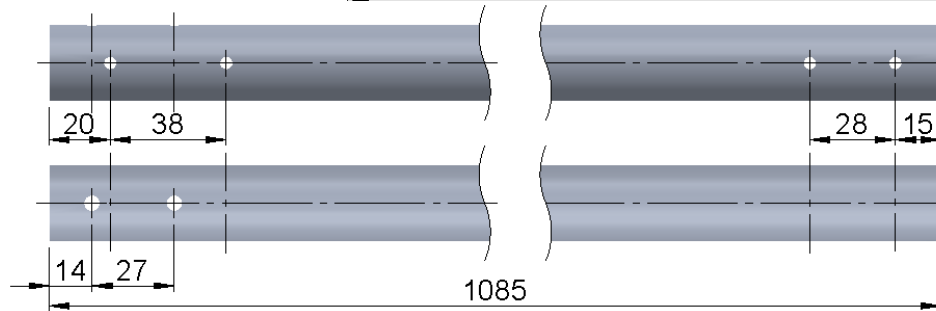
Part: D2_W3_02N
Quantity: 1+1



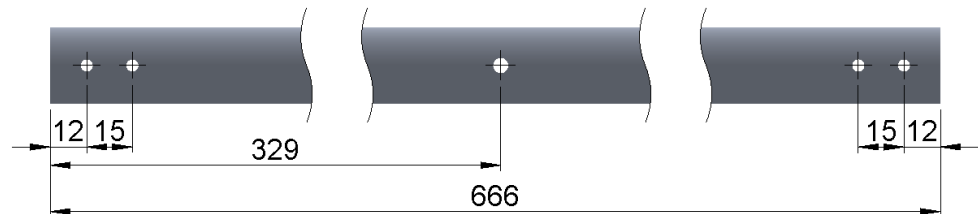
Part: D2_W3_03N
Quantity: 1+1



Part: D2_W3_04N
Quantity: 1+1



Part: D2_W3_05N
Quantity: 1+1

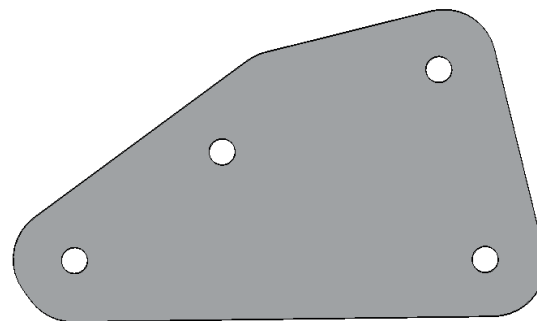


| Title | Document no. | Revision | Page | Pages |
|-----------------------|--------------|----------|------|-------|
| Strut assembly manual | D2_W3_00 | Rev. 02 | 7 | 17 |



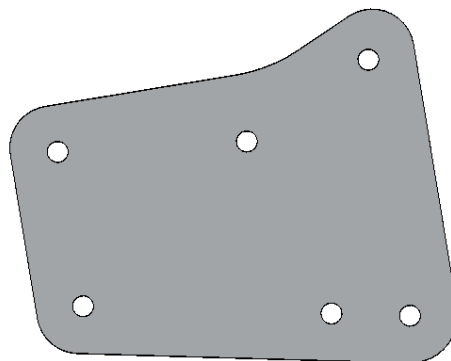
Part: D2_W3_06N

Quantity: 2+2



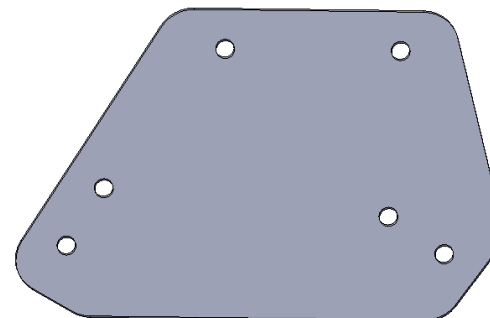
Part: D2_W3_07N

Quantity: 2+2



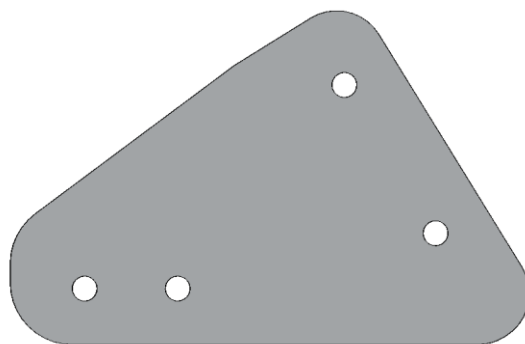
Part: D2_W3_08N

Quantity: 2+2



Part: D2_W3_09N

Quantity: 2+2

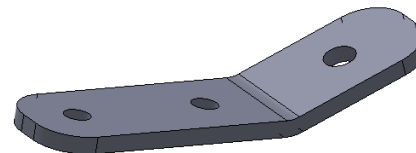


| Title | Document no. | Revision | Page | Pages |
|-----------------------|--------------|----------|------|-------|
| Strut assembly manual | D2_W3_00 | Rev. 02 | 8 | 17 |



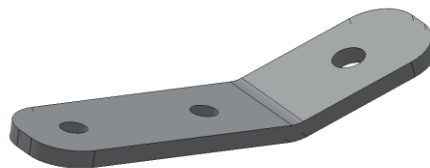
Part: D2_W3_10N

Quantity: 1+1



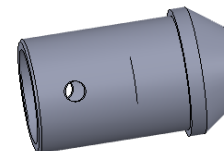
Part: D2_W3_11N

Quantity: 1+1





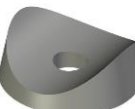
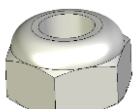
Part: D2_SP_02

Quantity: 1+1



| Title | Document no. | Revision | Page | Pages |
|-----------------------|--------------|----------|------|-------|
| Strut assembly manual | D2_W3_00 | Rev. 02 | 9 | 17 |

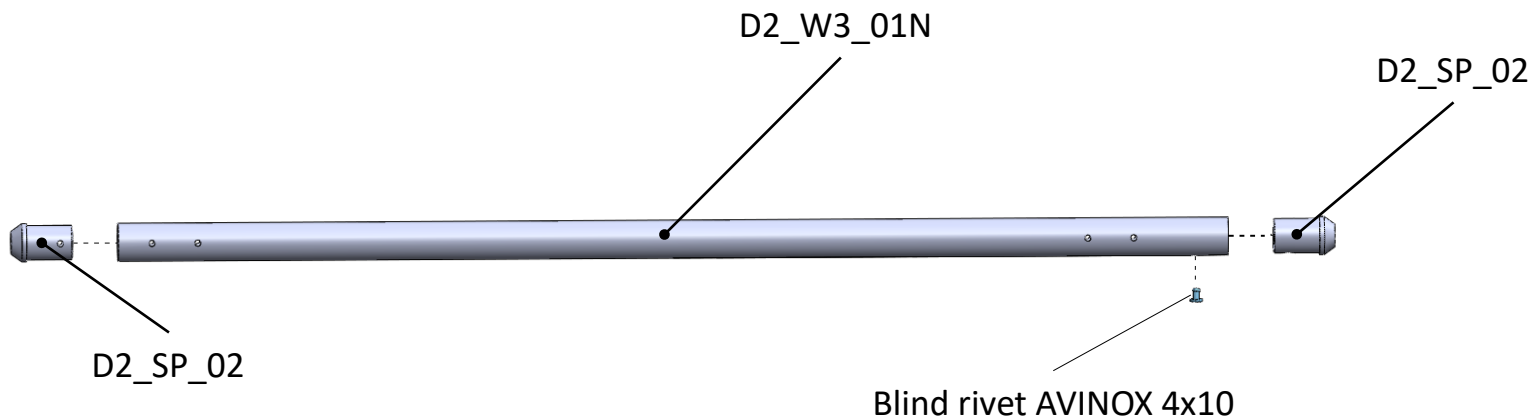


| Standard Parts | | |
|--|--------------------------|----------|
| Detail picture | Part | Quantity |
|  | Bolt DIN 912 M5x60 | 4+4 |
|  | Blind rivet AVINOX 4x10 | 41+41 |
|  | Washer 102a-034-25x3/6,2 | 8+8 |
|  | DIN 985 M5 Nylock Nut | 4+4 |

| Title | Document no. | Revision | Page | Pages |
|-----------------------|--------------|----------|------|-------|
| Strut assembly manual | D2_W3_00 | Rev. 02 | 10 | 17 |



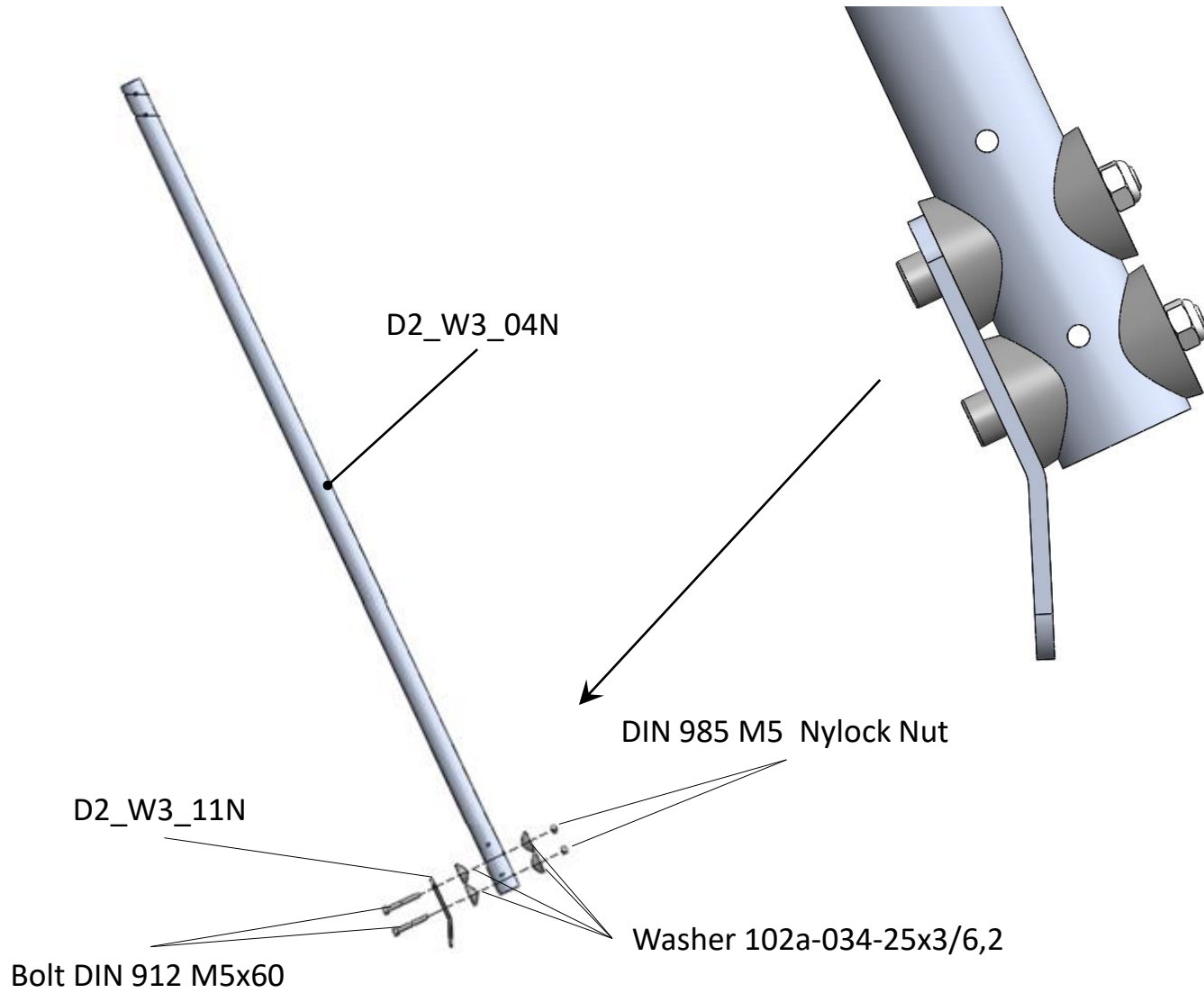
Step 1



| Title | Document no. | Revision | Page | Pages |
|-----------------------|--------------|----------|------|-------|
| Strut assembly manual | D2_W3_00 | Rev. 02 | 11 | 17 |



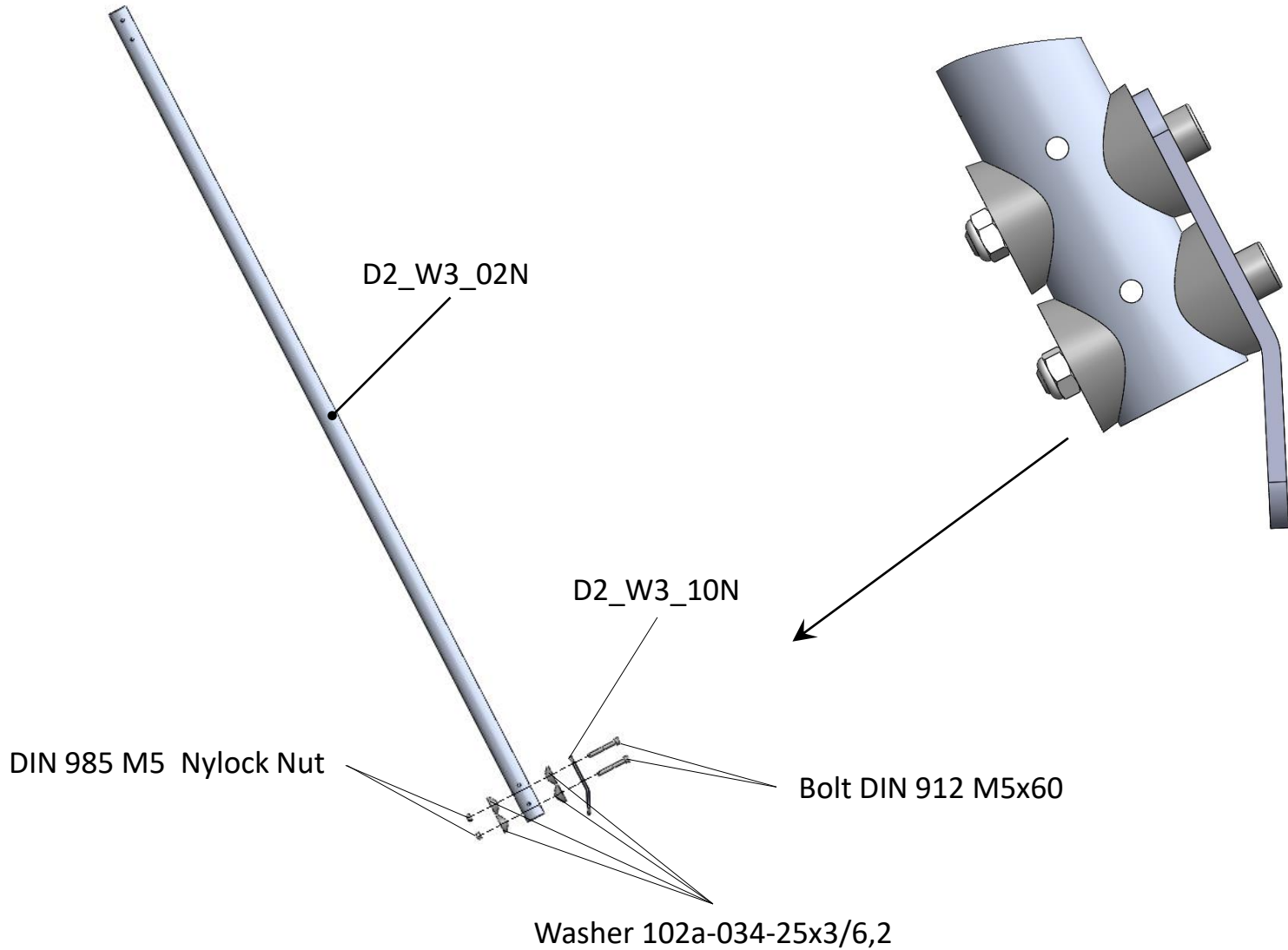
Step 2



| Title | Document no. | Revision | Page | Pages |
|-----------------------|--------------|----------|------|-------|
| Strut assembly manual | D2_W3_00 | Rev. 02 | 12 | 17 |



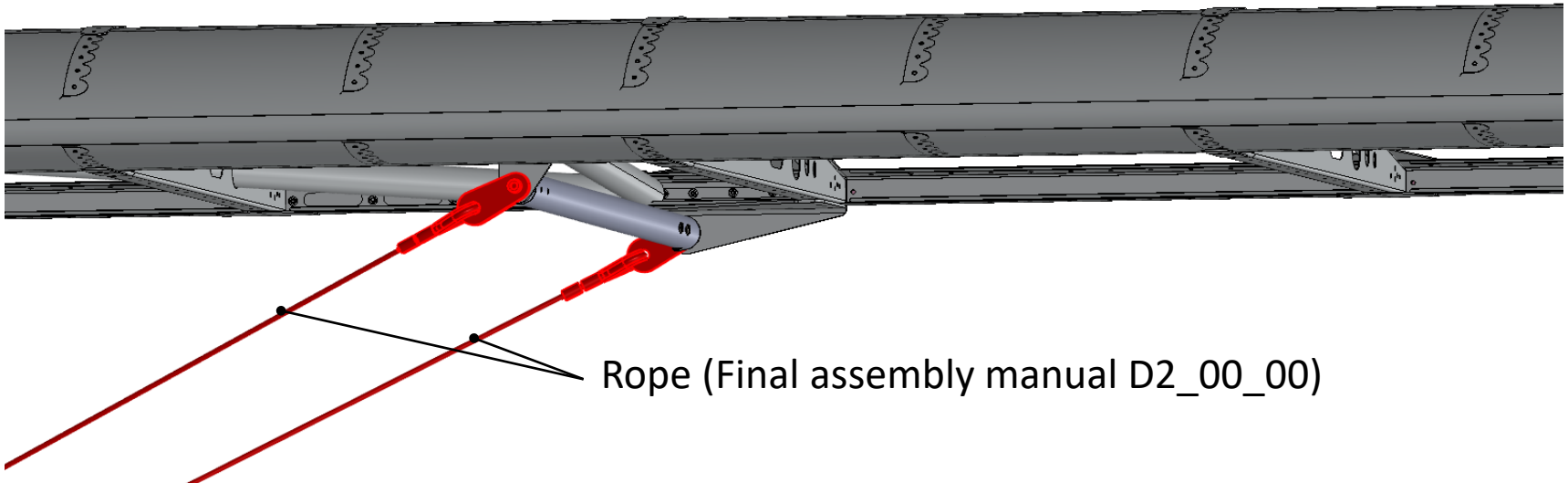
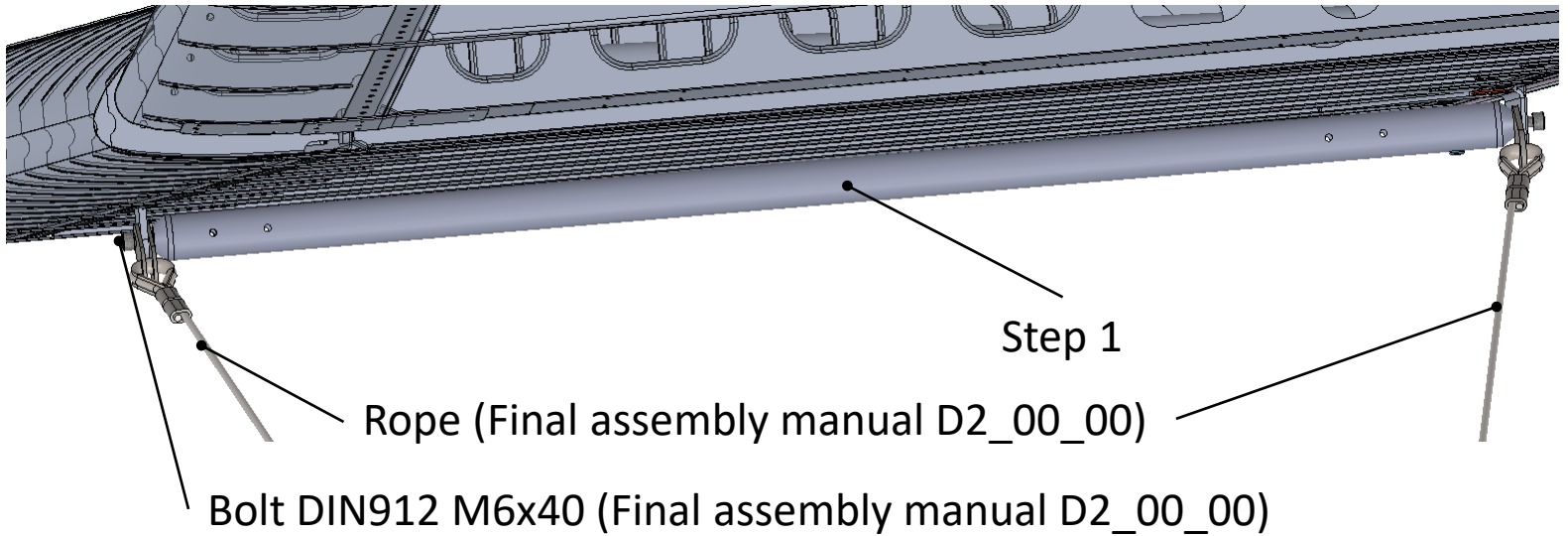
Step 3



| Title | Document no. | Revision | Page | Pages |
|-----------------------|--------------|----------|------|-------|
| Strut assembly manual | D2_W3_00 | Rev. 02 | 13 | 17 |



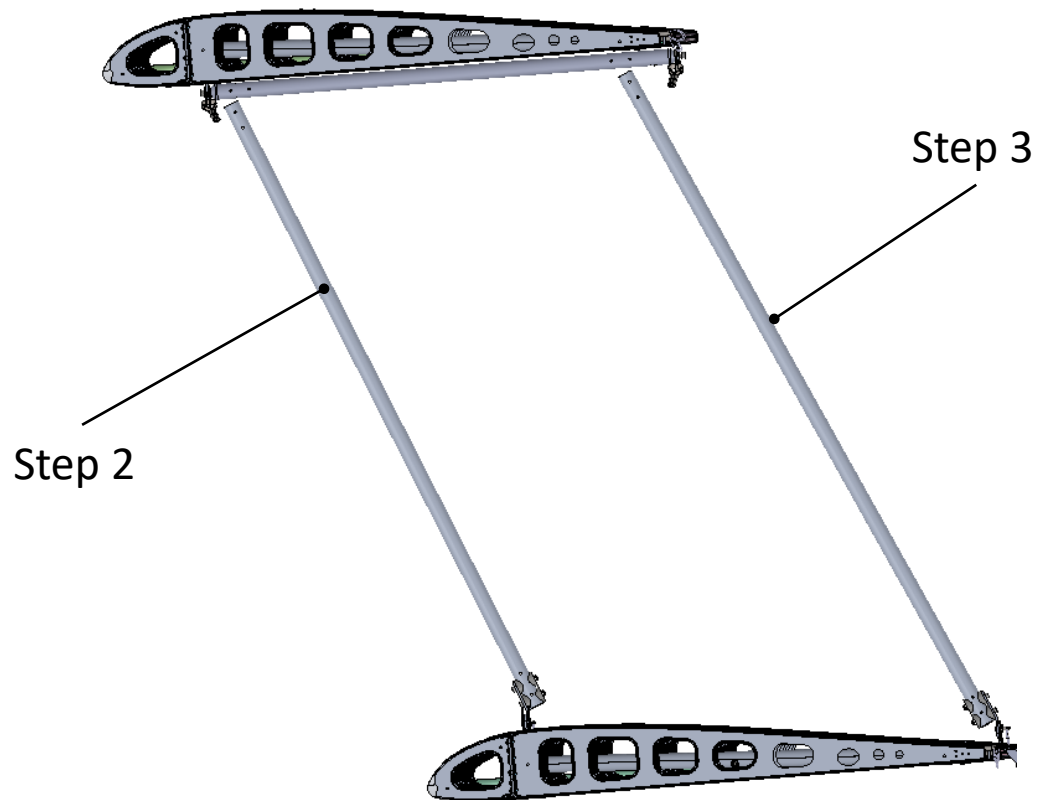
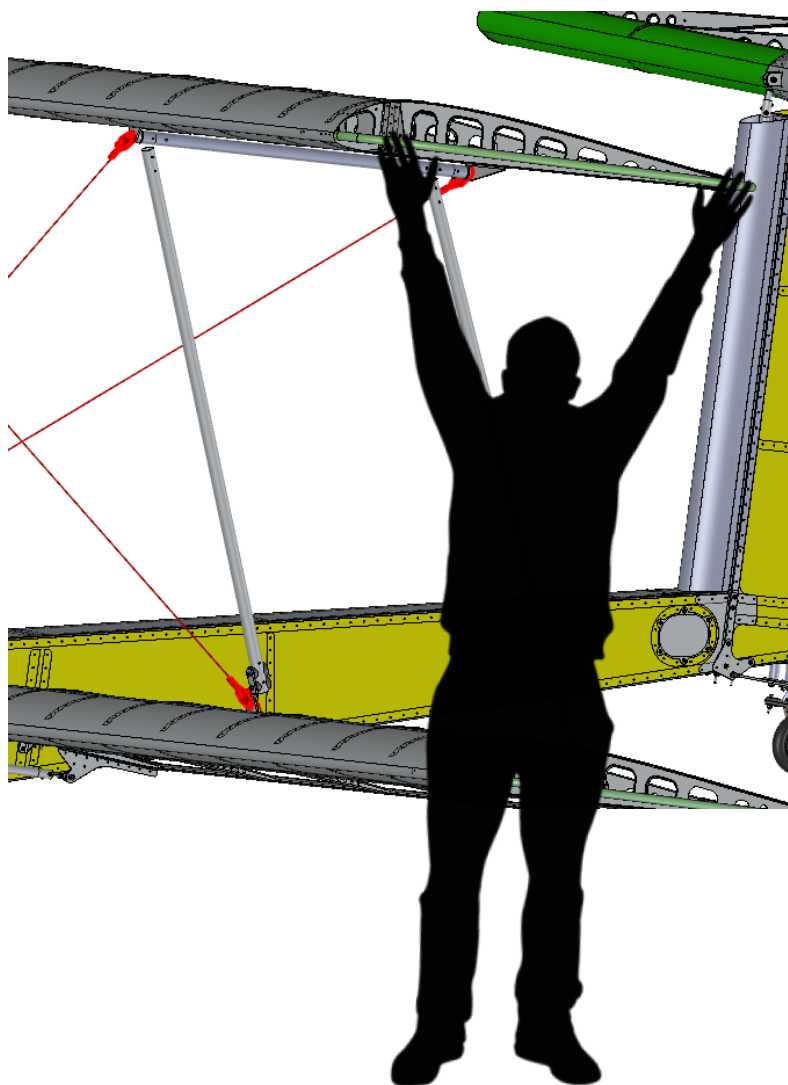
Step 4



| Title | Document no. | Revision | Page | Pages |
|-----------------------|--------------|----------|------|-------|
| Strut assembly manual | D2_W3_00 | Rev. 02 | 14 | 17 |



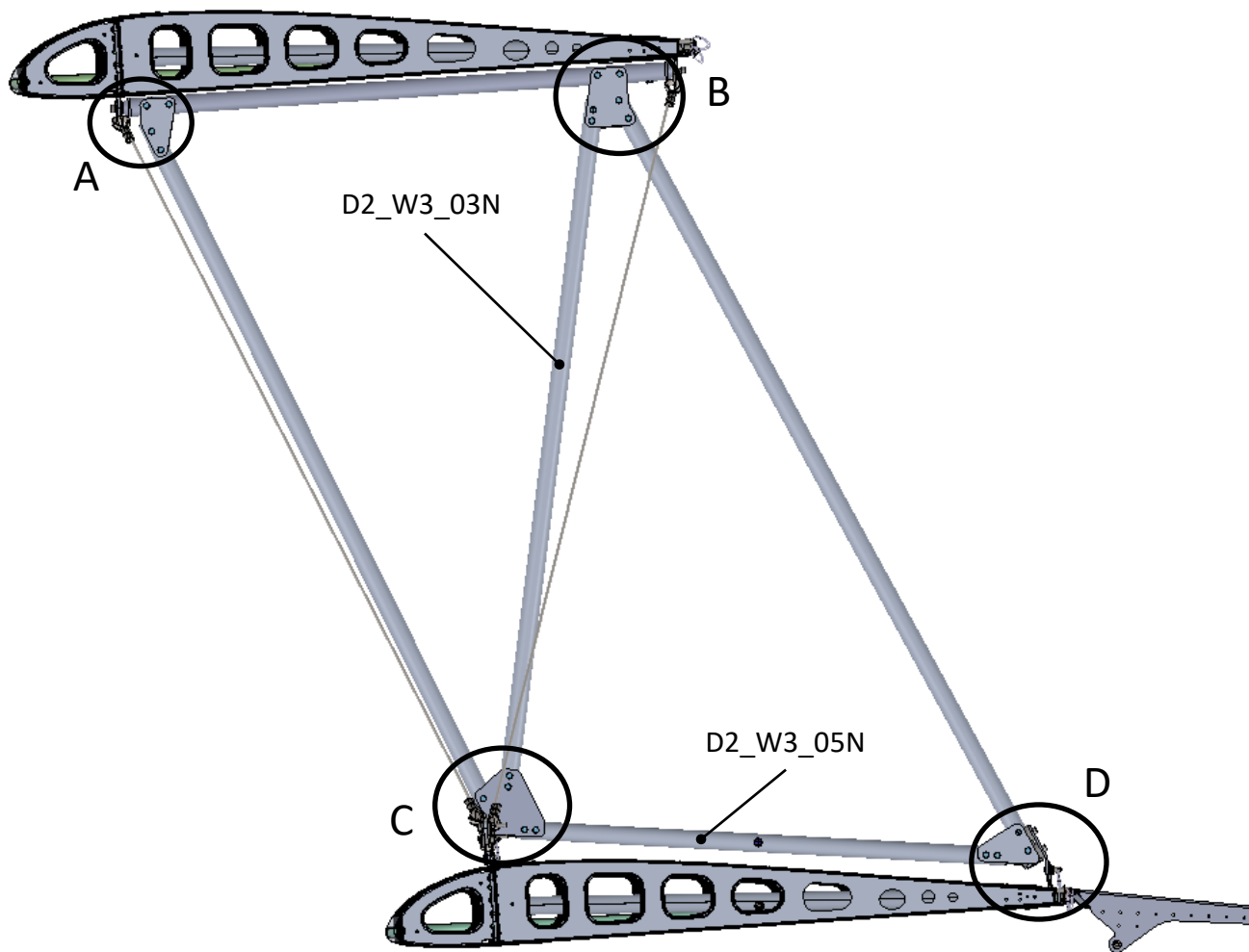
Step 5



| Title | Document no. | Revision | Page | Pages |
|-----------------------|--------------|----------|------|-------|
| Strut assembly manual | D2_W3_00 | Rev. 02 | 15 | 17 |



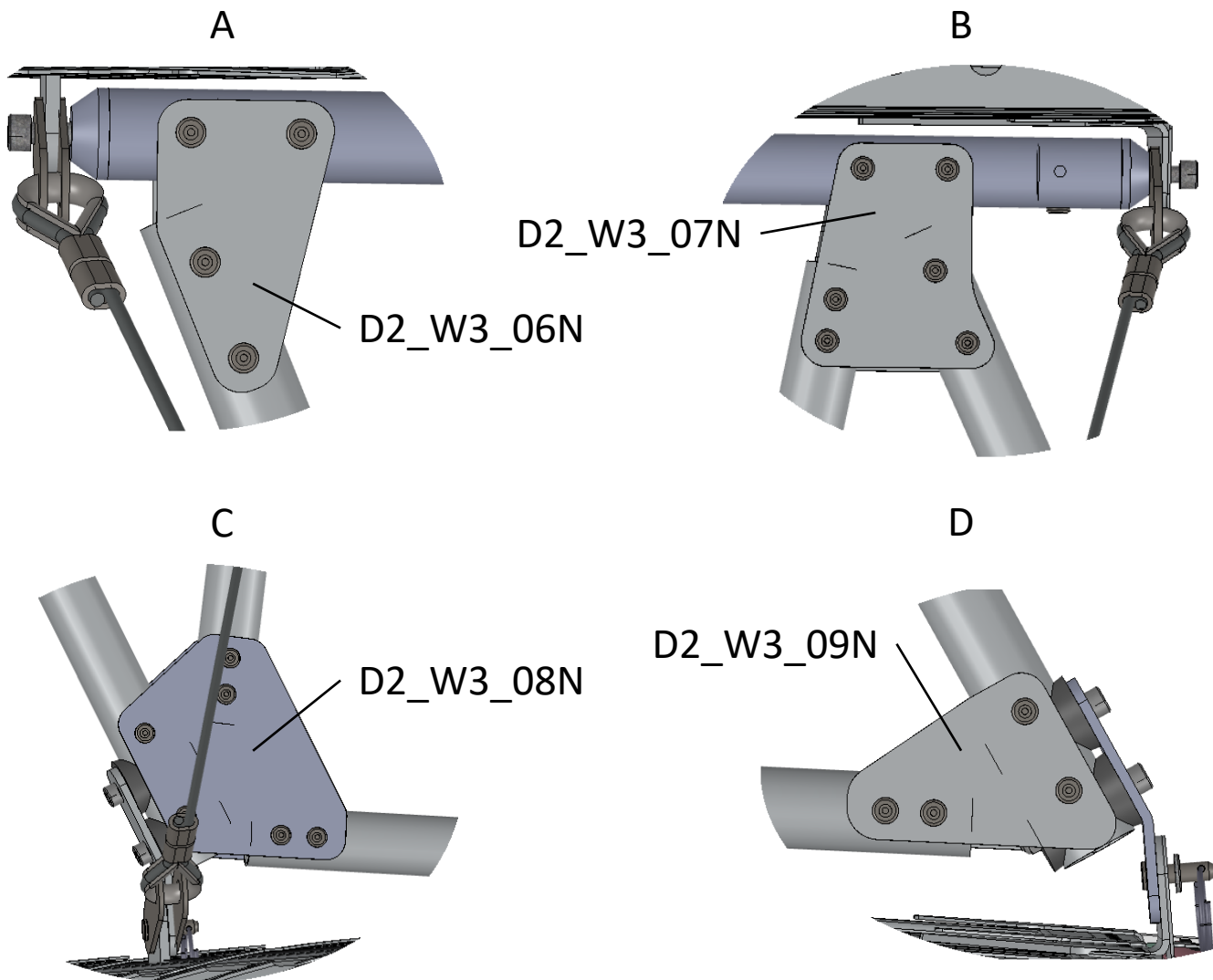
Step 6



| Title | Document no. | Revision | Page | Pages |
|-----------------------|--------------|----------|------|-------|
| Strut assembly manual | D2_W3_00 | Rev. 02 | 16 | 17 |



Step 6



| Title | Document no. | Revision | Page | Pages |
|-----------------------|--------------|----------|------|-------|
| Strut assembly manual | D2_W3_00 | Rev. 02 | 17 | 17 |